

sauermann Si-10 UNIVERS'L Condensate Pump User Manual

[Home](#) » [sauermann](#) » sauermann Si-10 UNIVERS'L Condensate Pump User Manual 

sauermann Si-10 UNIVERS'L Condensate Pump



Contents

- 1 SAFETY WARNING
- 2 PACKAGE CONTENT
- 3 Installation overview
- 4 Dos & Dont's
- 5 Maintenance & Care
- 6 Pump Power Supply
- 7 Pump safety switch
- 8 Initial operational test
- 9 WARRANTY
- 10 Documents / Resources
 - 10.1 References
- 11 Related Posts

SAFETY WARNING

Risk of electric shock. Make certain that the entire power supply to the unit/system is disconnected before attempting to install, service or remove any component. The pump unit must not be immersed in water, installed

outside the premises, stored in a damp environment or exposed to frost. This pump has not been investigated for use in swimming pool or marine areas.

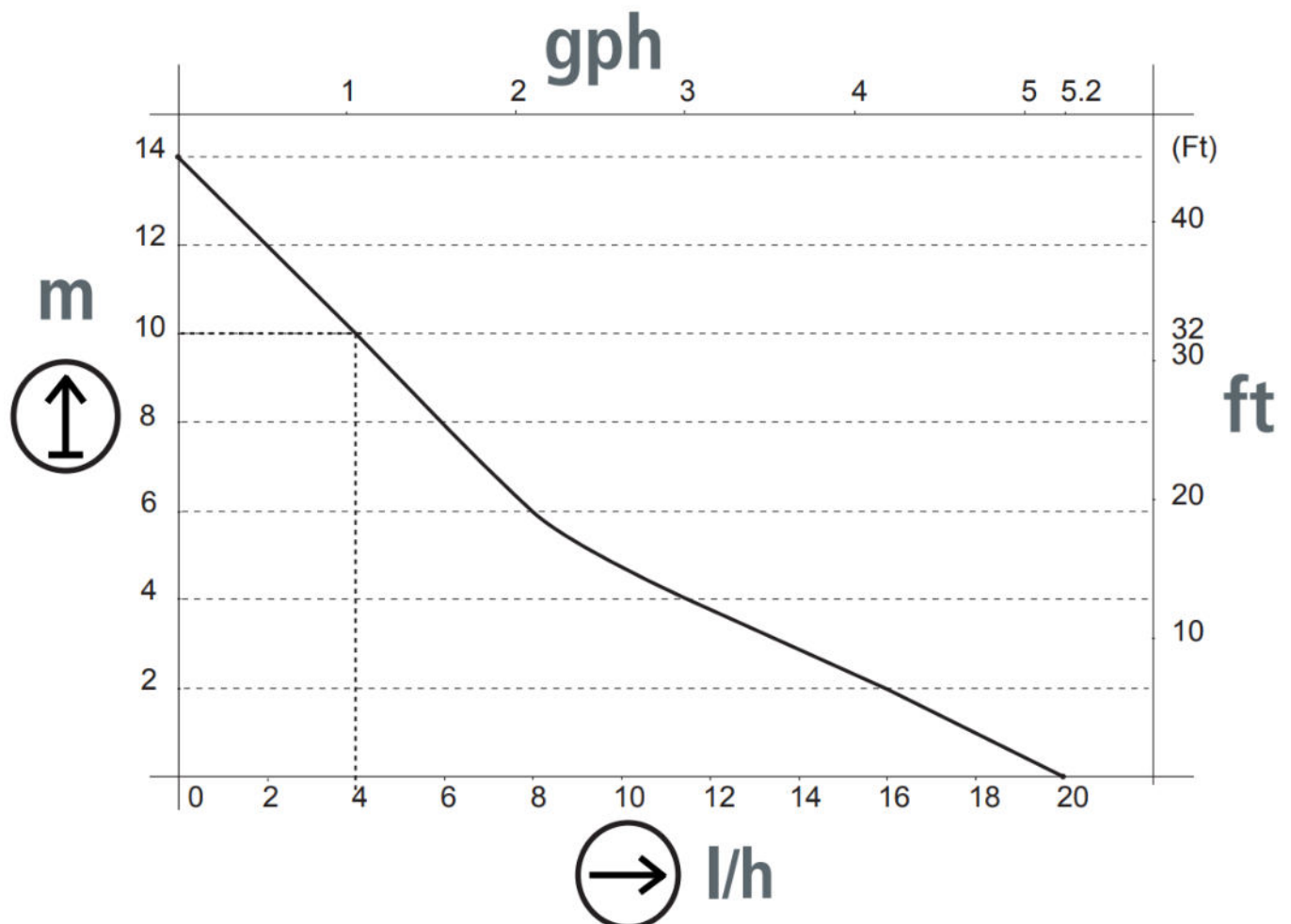
CAUTION: This pump has been designed for use with water only.

All condensate collection elements (collection tray, connecting tubes, outlets etc...) must be cleaned thoroughly prior to installing the pump.

The pump is supplied with :

- A self-resetting thermal cut-out set at 115°C (239°F).
- A self extinguishing body case (UL94 VO Material)

Max flow rate	50Hz : 20 l/h 60Hz : 19 l/h
Max discharge head	10m (33 ft)
Voltage	230V – 50Hz – 14W or 120V~60Hz – 14W or 208 – 230V~50/60Hz – 14W
Safety switch	NC 8 A resistive – 250 V
Thermal protection (overheating)	115°C (239°F)
Detection levels	On: 18mm Off: 13mm Al: 21mm On:5/8" Off:7/16" Al:3/4"
Sound level	22 dBA (1m – 3.3 ft)
Security standards	CE, UKCA, EAC
Protection	IPX4



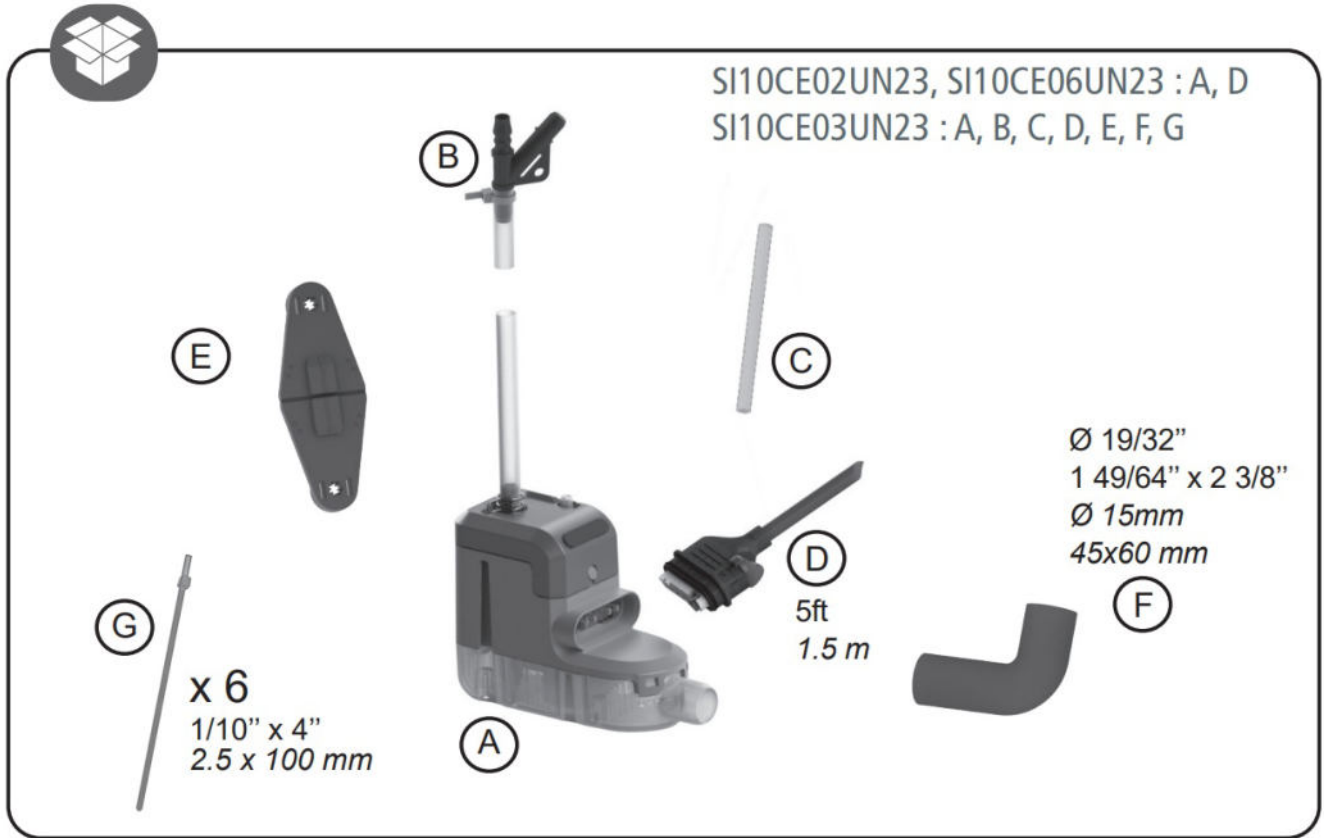


Discharge



Capacity

PACKAGE CONTENT



Recommended

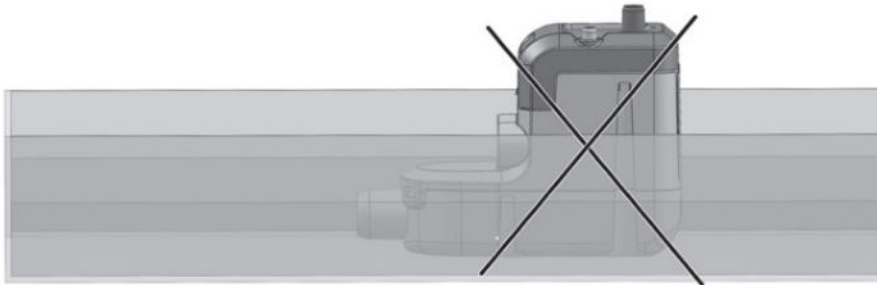


Optional

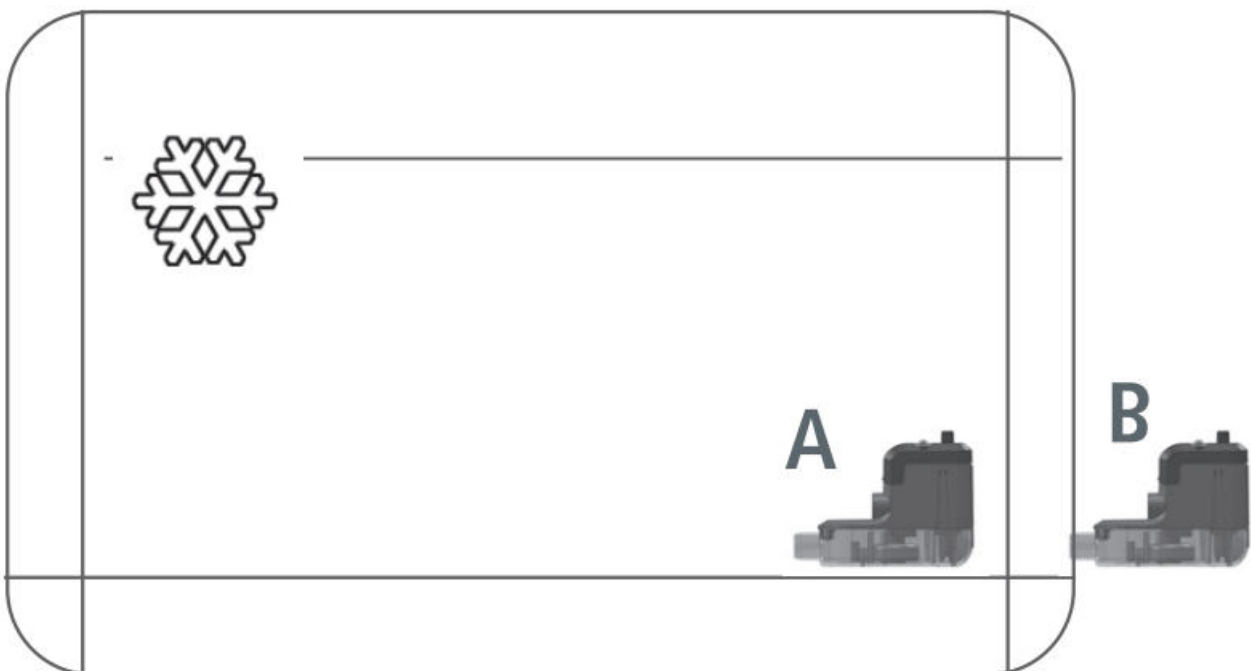


Prohibited

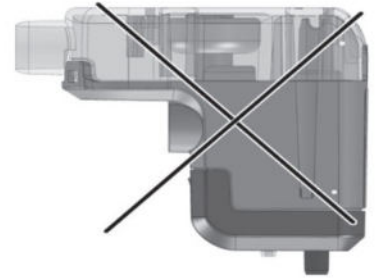
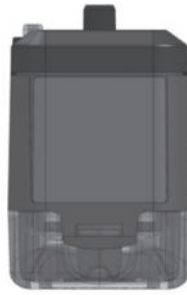
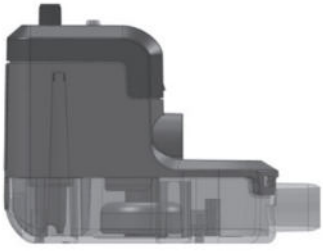
Installation overview



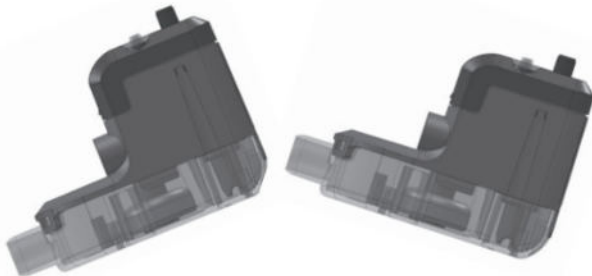
The pump unit can be installed within the air conditioning unit (A), or outside (B).
When installed outside the AC unit, the pump must not be accessible without the aid of a tool.



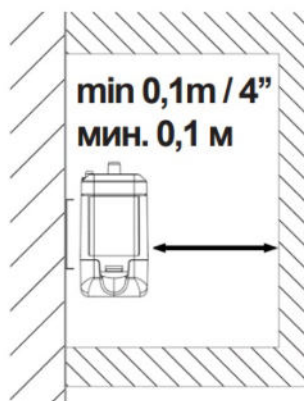
Dos & Dont's



+/-15° max / макс.

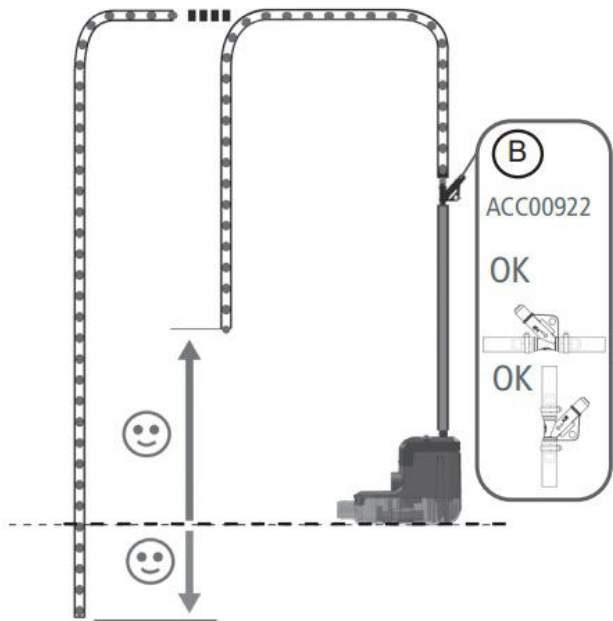
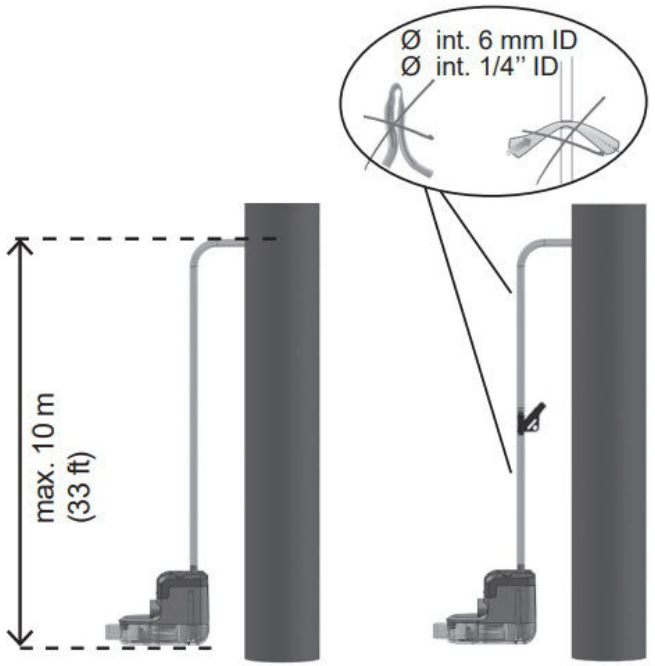
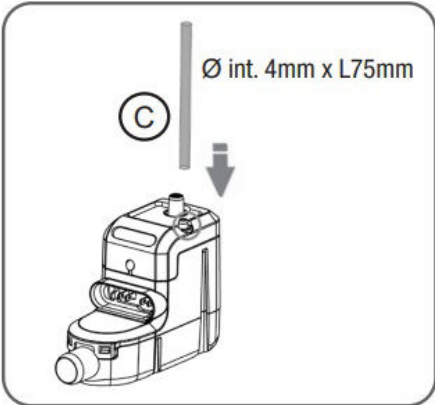
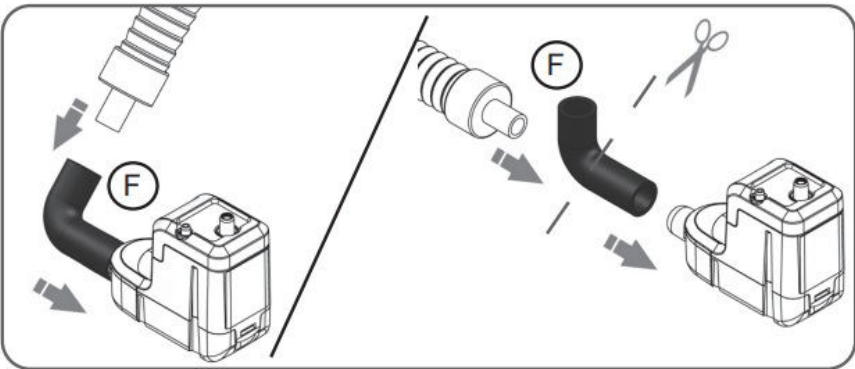
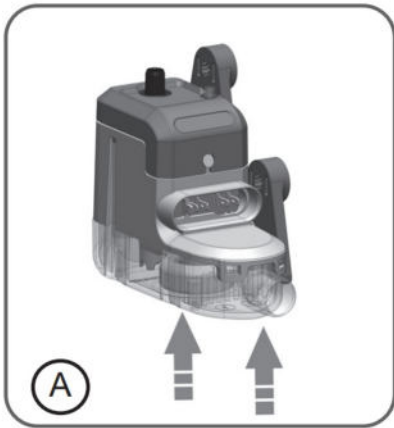
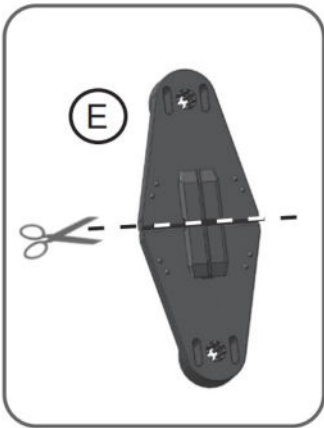


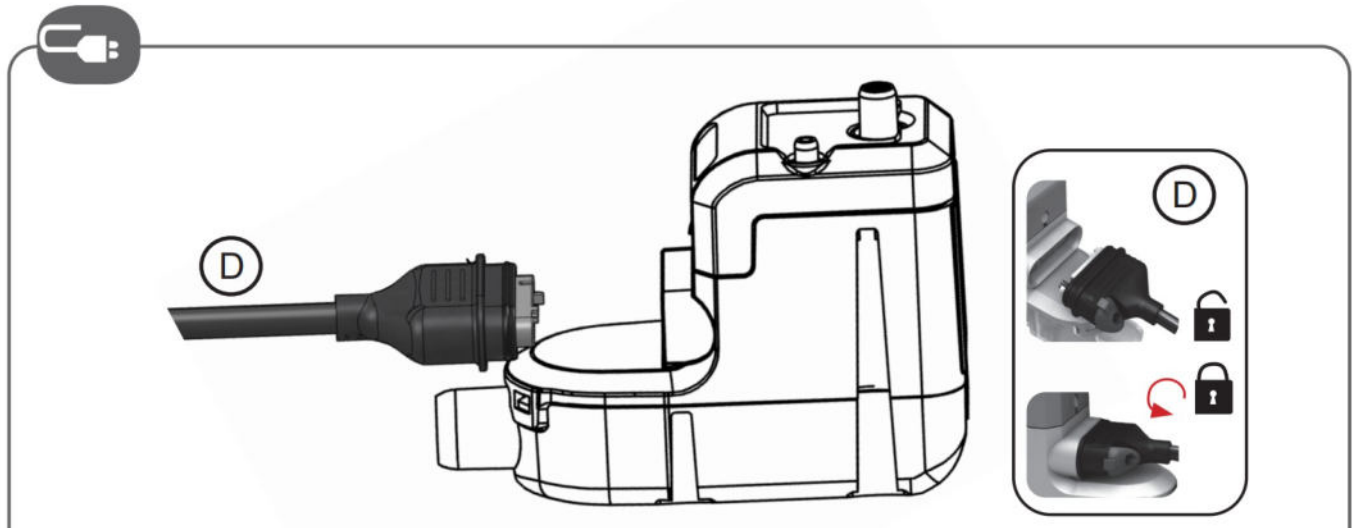
+/-15° max / макс.



Ensure power cable is not subject to prolonged water exposure.

Maintenance & Care





Pump Power Supply

Connect pump Phase and Neutral terminals to the air conditioner unit's power supply or to the mains supply to comply with local National Standards. We suggest use of :

– An interconnecting power cable (CE: HO5 VVF 2 x 0.5 mm² ; UL/CSA: 2 x 0.5mm² (AWG20) certified UL2464 – 80°C – 300V) which must be fastened securely to the wall, to avoid inadvertent disconnection during installation and later servicing.

– This connection should be equipped with an electrical isolation device to the Phase and Neutral. The pump must be powered by an electrical circuit protected against overvoltage > 2.5kV.

Pump safety switch

IMPORTANT : Connecting the safety switch is mandatory to avoid any risk of overflowing. For correct connection, refer to the manufacturer's appliance instructions.


The pump is equipped with a NC high water safety switch with a maximum rating of 8A/250V (safety switch CE: 2 x 0.5 mm² , UL/CSA: 2 x 0.5 mm² (AWG20)). This contact may be used to switch off the air conditioner where there is a risk of condensate overflow (after thorough verification by the installer of the customer's specific application and the resultant electric wiring diagram).

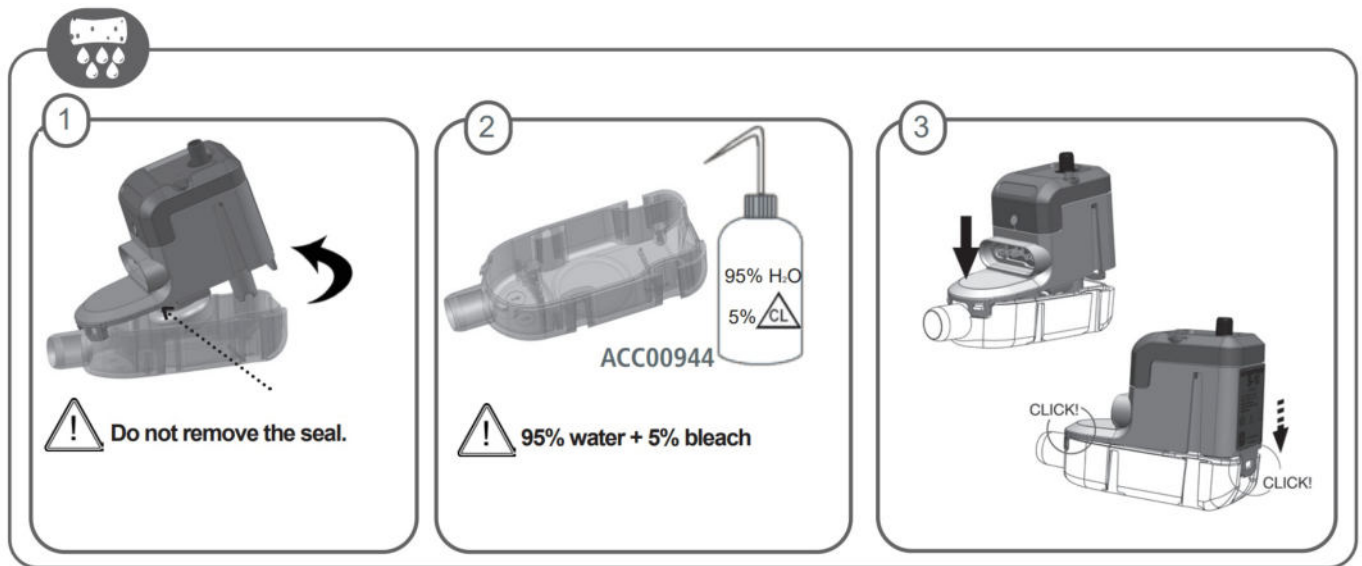
Do not break air conditioner's earth and communication wire.



Initial operational test

- First clean the condensate tray of any debris leftover from manufacture or unpacking of the air conditioner unit
- Pour slowly 100-250ml (3 – 8oz) of water onto the heat exchanger or into the condensate collection tray (a squeezable plastic bottle, ACC00944, is available)
- Check that the pump unit starts & then stops as the water level decreases.
- Check safety switch by continuing to pour water until the alarm triggers.

The pump must be cleaned and serviced at regular intervals in accordance with the degree of pollution existing within the pump operating environment . Void warranty if the detection reservoir rubber seal is removed.



If the pump doesn't start, check the wiring and incoming power supply.

For any problem, check :

- the discharge lines are neither obstructed nor kinked,
- the float inside the pump unit is not blocked
- the hydraulic inlets nor outlets are not obstructed

Additional checks could be necessary.

If the pump is running continuously (>1min), check:

- the discharge height is < 10 m,
- the pump is suitable for the capacity of the air conditioning unit,
- while starting of the pump, the flow of the water poured into the collection tray was not too high (ex: 1l in 30s=60l/h >>20l/h).

If the pump is running continuously and does not suck water check that all hose connection are secure and air tight.

If the pump cycles continually or does not shut off,

- turn the pump off and check water doesn't return down the discharge line. If water returns down the line you should change the pump.

Before you start cleaning your air conditioning system, you must remove the pump to prevent damage.

WARRANTY

2 years : <http://sauermann.co.uk/en-UK/warranty>

SAUERMANN UK

Units 7-9, Trident Business Park
Amy Johnson Way
Blackpool – Lancashire FY4 2RP
U.K.


Tel. : +44 (0) 01253 340170

Fax : +44 (0) 01253 340179

E-mail: sales.uk@sauermanngroup.com



Documents / Resources

	<p>sauermann Si-10 UNIVERS'L Condensate Pump [pdf] User Manual Si-10 UNIVERS L Condensate Pump, Si-10 UNIVERS L, Si-10 UNIVERS L Pump, Condensate Pump, Pump</p>
---	--

References

- [Warranty | Sauermann group](#)
- [Garantie | Sauermann group](#)
- [Warranty | Sauermann group](#)
- [Garantie | Sauermann group](#)

Manuals+